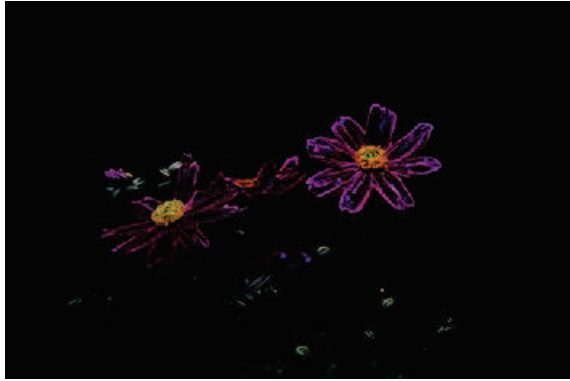


# Heike Seyffarth



*Starpetal, 2024*  
Photography, 40 x 60 cm

## Marginal Phenomena

Marginal Phenomena by Heike Seyffarth explores the delicate forms of plants, transformed through intensive photographic processing. By removing the background, the outer contours of each botanical element are brought into sharp focus, distilling the complexity of nature into simplified forms and drawing connections between visually similar structures.

*The highlighted stems and blossoms reflect nature's inherent drive for optimization—achieving evolutionary perfection with minimal material effort. More abstractly said, they represent the historical Bauhaus statement of “Form follows Function”.*

These works invite viewers to engage with the aesthetics of reduction, emphasizing the beauty found in natural lines, structures, and patterns.

Get in touch with Heike: <https://phototio.org>  
Instagram: @heike\_seyffarth

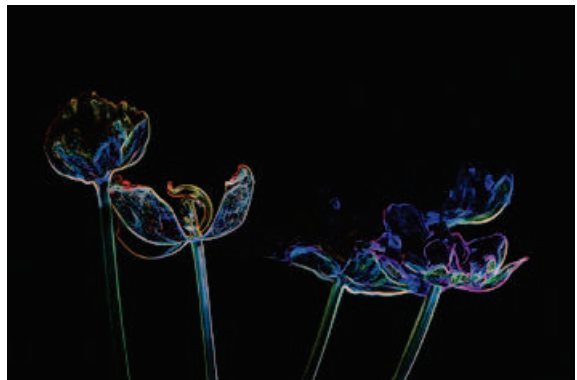
## About Heike

*Heike Seyffarth is an artist and curator in Bremen, Germany. She studied Creative Arts at Hochschule Bremen and Hochschule für Künste Bremen, Curating at the University of the Arts in Berlin, and holds an MBA in Innovation Management from Hochschule Bremen.*

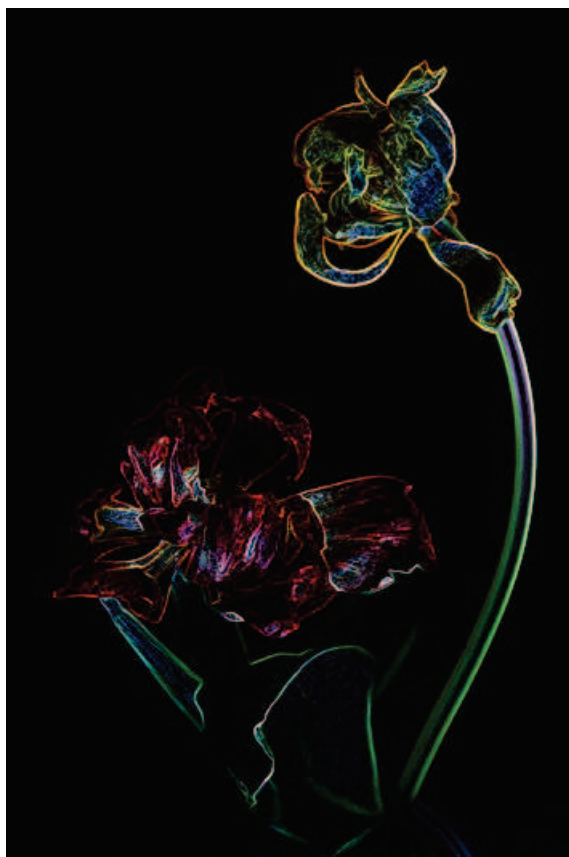
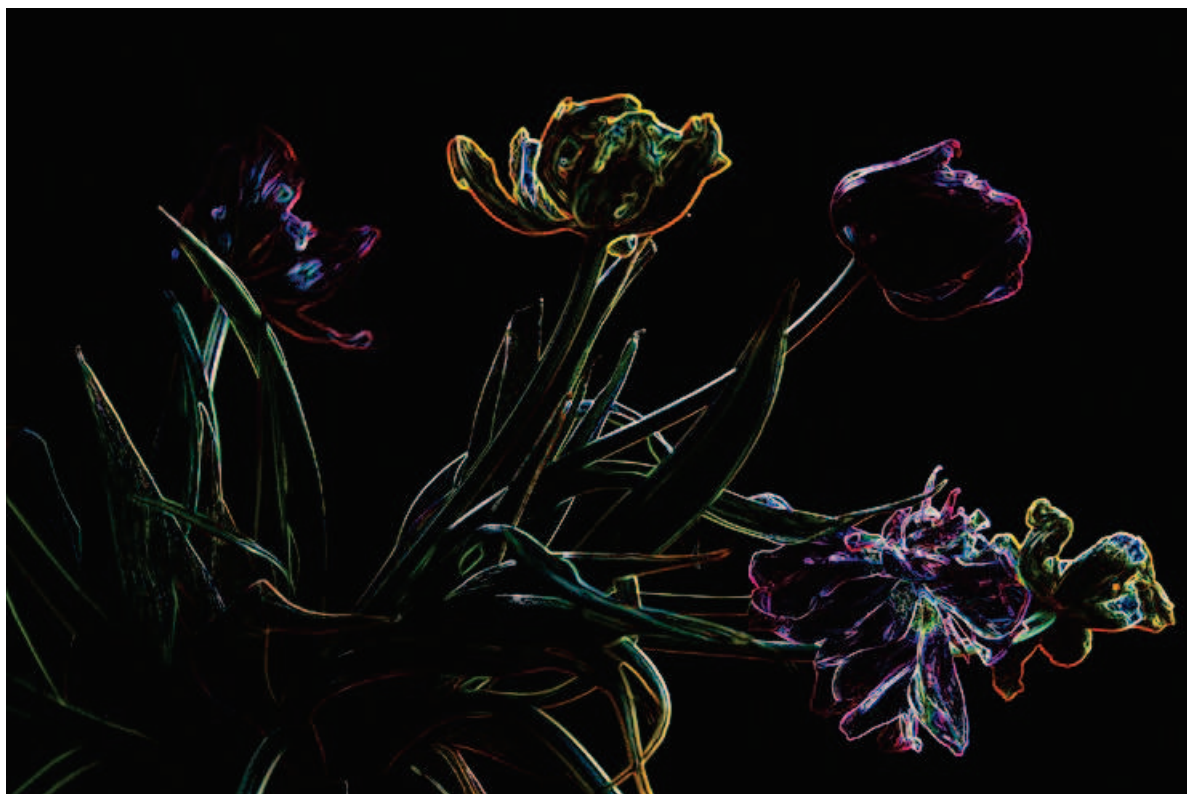
Her work has been featured in several solo exhibitions in and around Bremen, alongside participation in numerous group exhibitions. As a curator, she has contributed to projects at institutions such as Creative Hub Bremen and Kunsthau Findorff in Bremen.

*Currently, she is an artist-in-residence at Constructor University Bremen, where her ongoing project culminates in the exhibition Virus Meets Men, on view at Stiftungshaus Bremen until end of April 2025.*

Deeply inspired by nature, Seyffarth echoes the sentiments of classical masters who regarded nature as the greatest artist. Her work is distinguished by the fluid transitions between lines, structures, surfaces, and colors—highlighting the organic harmony inherent in natural forms.



*Azureflare, 2024*  
Photography, 40 x 60 cm



Up: *Mystveil*, 2024, Photography, 40 x 60 cm  
Down: *Glimmerroot*, 2024, Photography, 60 x 40 cm (left) / *Dawnwhisper*, 2024, Photography, 60 x 40 cm (right)